

# The Mystery of Cinema Suspects

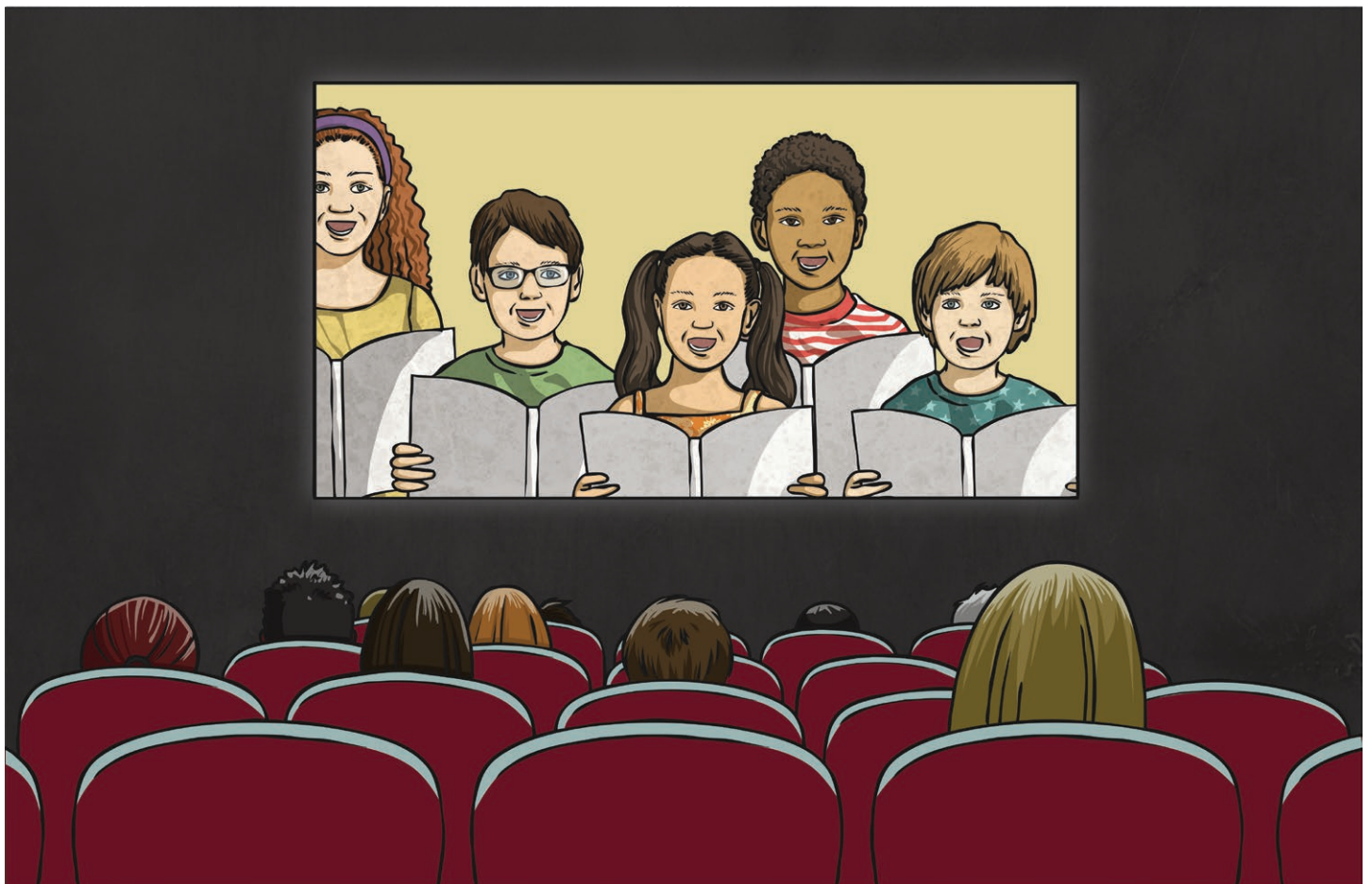
It is the premiere of the new film 'Rambunctious Me 4'. However, during the screening, the film was switched to an old copy of 'Gnashers 2' and the highly prized 'Rambunctious Me 4' was nowhere to be seen.

The alarm was raised (everyone in the auditorium had noticed the film stop anyway), the house lights went up and there was mayhem, so it was impossible to see who was where.

The TV cameras were there filming people going in and the cinema's CCTV caught a number of people passing through the doorway during the film. The cinema also has records of who was sitting on which row.

You have been called in as the leading detective on the case and you have a team of Scene of Crime Officers (SOCOs) to assist you. Solve the following clues to eliminate all but one of the following suspects based on their gender, hair colour, shoe type, the row of their seat and the reason they left the auditorium during the film.

Good luck - the producers of Rambunctious Me 4 are counting on you!



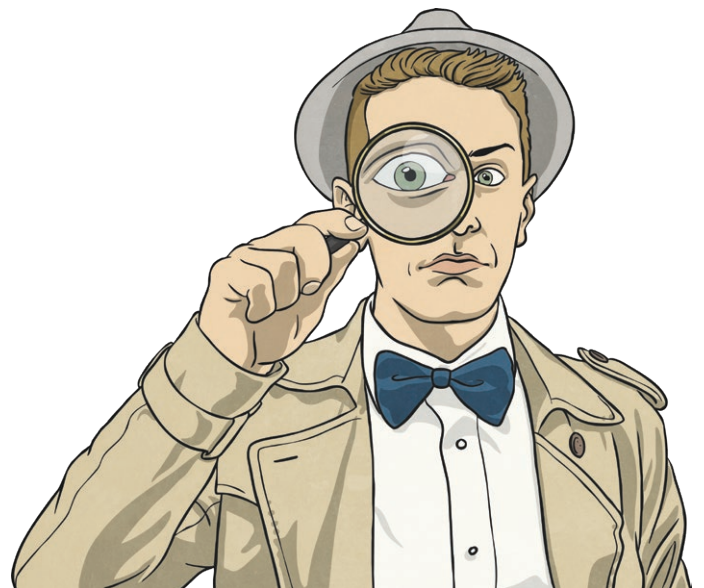
## The Mystery of Cinema Suspects

Name	M/F	Hair Colour	Reason not in Seat	Shoe Size	Seat Row
Antonio Andrews	M	Brown	Went for drinks	8	A
Angelina Affleck	F	Brown	Didn't leave seat	9	E
Brad Bloom	M	Grey	Visited toilet	7	B
Bette Bean	F	Brown	Didn't leave seat	8	A
Carrie Cruise	F	Ginger	Arrived late	6	E
Clint Clooney	M	Blonde	Went for drinks	7	C
Demi De Vito	F	Black	Didn't leave seat	4	F
Dev Depp	M	Ginger	Visited toilet	5	D
Ethan Elba	M	Brown	Left early	8	C
Emma Eccleston	F	Blonde	Didn't leave seat	6	A
Farrah Fisher	F	Brown	Went for drinks	9	B
Feroz Fassbender	M	Ginger	Arrived late	6	E
George Guinness	M	Grey	Didn't leave seat	7	G
Goldie Gosling	F	Black	Visited toilet	7	A
Harrison Hanks	M	Brown	Visited toilet	4	G
Hallé Hogan	F	White	Went for drinks	5	D
Idris Ice-Cream	M	Blonde	Didn't leave seat	9	B
Imelda Intermission	F	Ginger	Arrived late	6	F
Jude Jolie	M	Brown	Didn't leave seat	8	C
Judy Johansson	F	Brown	Visited toilet	5	G
Kiefer Knightly	M	Black	Left early	5	B
Keira Kutcher	F	Blonde	Went for drinks	10	D
Liza Lopez	F	Black	Left early	6	A
Leonardo Law	M	Brown	Visited toilet	10	A
Marilyn Moore	F	Ginger	Didn't leave seat	9	D
Morgan Mirren	M	Grey	Didn't leave seat	4	C
Nicolas Newton-John	M	Brown	Left early	7	F
Naimh Norton	F	Blonde	Went for drinks	5	A
Orlando O'Neill	M	Brown	Visited toilet	7	G
Olivia Olsen	F	Brown	Didn't leave seat	10	E
Patty Patel	F	Grey	Went for drinks	6	B
Patrick Pattinson	M	Blonde	Visited toilet	8	A

# Clue 1

The SOCOs have found that the perpetrator must have cut their hand on a sharp corner of the projector when they were stealing the films. This was analysed and uncovered the following information. To unravel the clue, find the words described below in the word search. At the end, the unused squares will spell out the clue.

- A triangle with all sides equal
- Number of sides on a hexagon
- The square root of 49
- An angle less than  $90^\circ$
- The distance across the widest part of a circle
- Eight sided shapes
- Two lines that are the same distance apart
- Lines that are at  $90^\circ$  to each other
- Four-sided shape with two sets or parallel lines, no right angles and all sides the same length.
- An angle larger than  $90^\circ$  but less than  $180^\circ$
- A 3D shape with two circular faces and no vertices
- The measurement around the edge of a 2D shape
- A triangle with no sides the same
- Half a sphere
- The top number of a fraction
- A 3D shape with a square base and four other triangular faces
- The shape of dice
- A type of diagram with circles and sets
- A number only divisible by itself and 1
- The proper name for a corner of a 3D shape
- The most popular number in a set of data
- One of the main lines of a graph either called x or y
- Old measurement such as miles or pounds
- 1% of £1
- One tenth of a centimetre
- One thousandth of a KG



p	e	r	p	e	n	d	i	c	u	l	a	r
e	c	q	e	r	e	h	p	s	i	m	e	h
r	n	p	u	n	e	v	e	s	u	t	b	o
i	u	y	u	i	l	p	e	m	i	r	p	m
m	m	r	c	y	l	i	n	d	e	r	a	b
e	e	a	u	s	c	a	l	e	n	e	r	u
t	r	m	b	i	r	i	t	t	i	x	a	s
e	a	i	e	x	e	t	r	e	v	i	l	s
r	t	d	i	a	m	e	t	e	r	s	l	n
m	o	d	e	m	a	e	t	u	c	a	e	n
g	r	a	m	i	m	p	e	r	i	a	l	e
m	i	l	l	i	m	e	t	r	e	l	e	v
p	e	n	n	y	s	n	o	g	a	t	c	o



# Clue 2

On the door frame of the projection room, the SOCOs have found some hair snagged from the culprit. They need to do some further investigation but it does tell them something...

Below are some calculations but, unfortunately, the answers are wrong. Work out the calculations to find out which digit or digits in the answer are wrong. Change each of the wrong digits into a letter, using the code 1 = A, 2 = B, 3 = C, etc. Then, rearrange the letters to spell out a clue.

1.  $14 \times 3 = 48$

2.  $156 + 245 = 411$

3.  $399 - 77 = 329$

4.  $2000 \div 5 = 418$

5.  $12 \times 15 = 190$

6.  $654 + 123 = 719$

7.  $1000 - 97 = 914$

8.  $1344 \div 6 = 215$

9.  $1101 \times 3 = 3320$

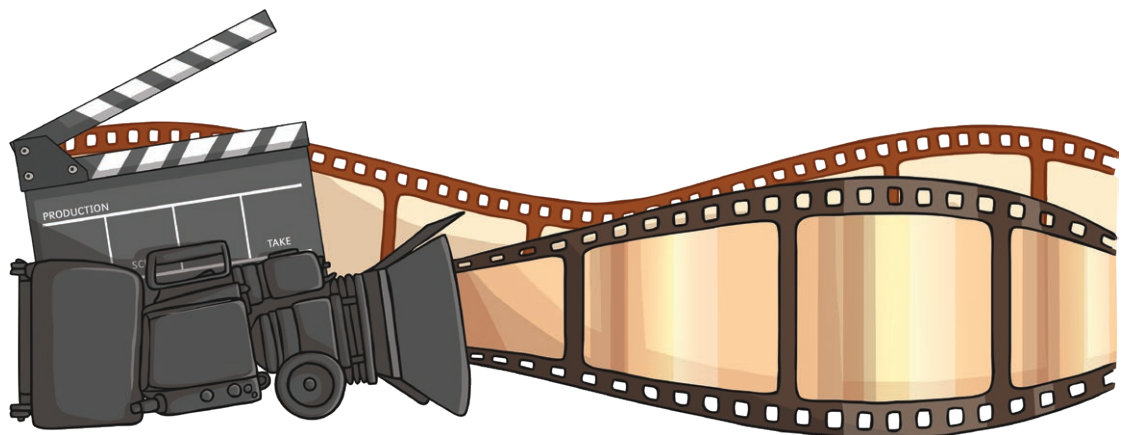
10.  $1984 + 1995 = 3929$

11.  $5000 - 349 = 4618$

12.  $414 \div 18 = 15$

13.  $120 \times 12 = 1230$

14.  $299 + 399 = 614$



# Clue 3

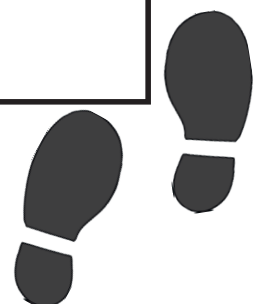
The SOCOs have found part of a footprint in the projection room where the culprit had stood in some spilt ice cream.

There's not a whole footprint but the SOCOs can work out a rough size for the print.

Solve the Sudoku below and add up the numbers in the shaded squares to give the smallest shoe size the culprit could be.

Fill in the blank squares with digits from 1 to 6, making sure that there are only one of each digit per row, per column and per rectangle.

1	3	2			6
	4	5		3	2
	5	6			1
3	1		2	6	5
5	2		6	1	
		1		2	



# Clue 4

The SOCOs have traced the ice cream spill from clue 3 back to the auditorium so it has allowed them to work out roughly where the culprit was sitting.

You can find their answer by solving the algebraic equations to find out the value of each letter below.

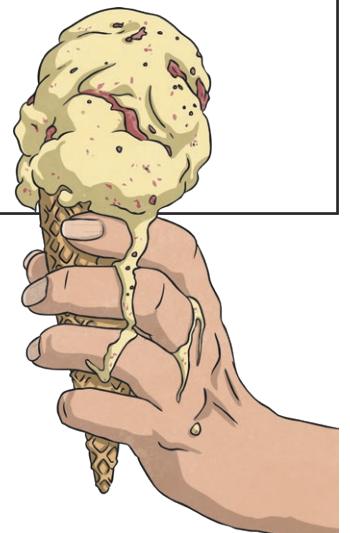
Then you will be able to solve the clue.

Algebraic Expressions
$a + 6 = 10$
$15 - e = 9 + 4$
$a + e = i$
$10 \div e = l$
$m = l \times e$
$(a - 1)^2 = n$
$e^3 = o$
$r = \sqrt{n}$
$s = \frac{m+a}{2}$
$-7 = t - 8$
$r^2 + e = w$

Answers
a =
e =
i =
l =
m =
n =
o =
r =
s =
t =
w =

Clue:

3,8,11, 5,2,1,1,2,3, 7,4,10,2, 4,7,  
9,4,10,2, 6,9,6,1,6,4,5,7

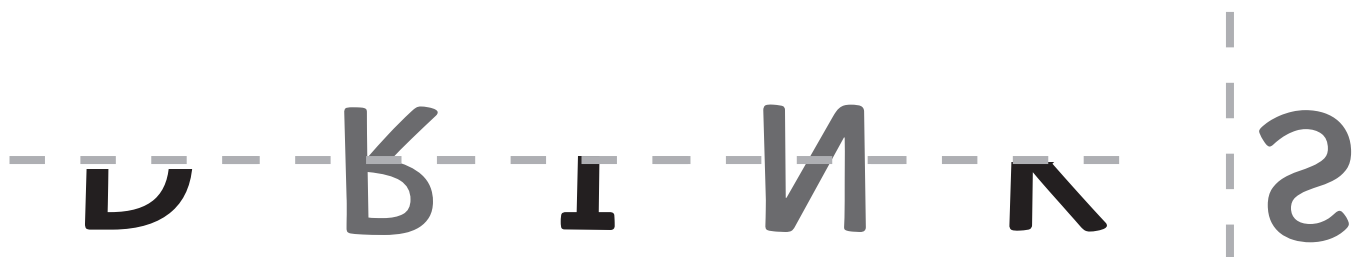
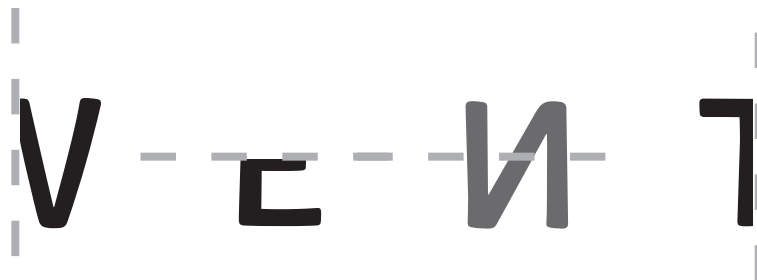
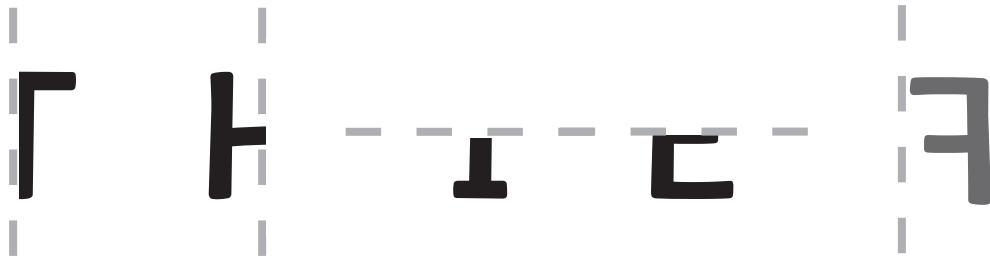




# Clue 5

While you were looking at the CCTV, you could work out when and why the culprit left their seat.

Complete these reflections to show each letter and reveal the final clue. Be careful, the grey ones are tricky reflections, some of which might need parts reflecting on both sides of the mirror line!



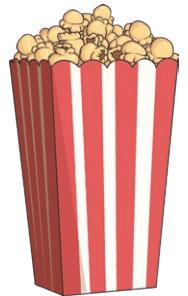


# The Confession

When the culprit was finally caught, they had this to say...

Use your knowledge of the times tables and find two numbers - one number along the top row and another from the left - that can be multiplied together to make each number from the table below. Each 2 numbers will align with a letter. Once you have found all the letters, the confession will be revealed.

x	12	9	7	3	20	6	8	4	30	5
10	O	M	©	R	Q	V	N	A	L	)
5	V	F	:	C	#	R	A	(	@	=
4	E	E	G	-	N	H	D	W	O	+
7	"	!	Z	I	\	S	.	G	\$	:
9	U	[	!	H	T	X	Y	E	<	F
100	K	/	£	L	&	J	%	>	P	'
3	E	V	I	~	V	,	H	-	M	C
8	]	Y	.	H	*	B	X	D	?	A
12	'	U	"	E	?	Y	"	B	;	V
6	Y	A	S	,	O	E	B	H	T	R



21	16	40	42	600	108	42	180		
16	40	80	180	21	80	28	180	120	
30	36	500	32	21	30	36	15	180	144
180	24	36	90	120	60	21	36	63	

# The Mystery of Cinema Suspects - Answers

## Clue 1:

culprit is male.

p	e	r	p	e	n	d	i	c	u	l	a	r
e	<b>c</b>	q	e	r	e	h	p	s	i	m	e	h
r	n	p	u	n	e	v	e	s	u	t	b	o
i	u	y	<b>u</b>	i	<b>l</b>	<b>p</b>	e	m	i	r	p	m
m	m	r	c	y	l	i	n	d	e	r	a	b
e	e	a	u	s	c	a	l	e	n	e	r	u
t	r	m	b	i	<b>r</b>	<b>i</b>	<b>t</b>	<b>t</b>	<b>i</b>	x	a	s
e	a	i	e	x	e	t	r	e	v	i	l	<b>s</b>
r	t	d	i	a	m	e	t	e	r	s	l	n
m	o	d	e	<b>m</b>	<b>a</b>	e	t	u	c	a	e	n
g	r	a	m	i	m	p	e	r	i	a	l	e
m	i	l	l	i	m	e	t	r	e	<b>l</b>	<b>e</b>	v
p	e	n	n	y	s	n	o	g	a	t	c	o

## Clue 2:

hair is not brown.

(8,1,9,18,9,19,14,15,20,2,18,15,23,14)

Correct Answers are:

1. 42
2. 401
3. 322
4. 400
5. 180
6. 777
7. 903
8. 224
9. 3303
10. 3979
11. 4651
12. 23
13. 1440
14. 698

# The Mystery of Cinema Suspects - Answers

## Clue 3:

Reveals: smallest shoe size 7

(4 + 2 + 1)

1	3	2	4	5	6
6	4	5	1	3	2
2	5	6	3	4	1
3	1	4	2	6	5
5	2	3	6	1	4
4	6	1	5	2	3

## Clue 4:

Spells: Row letter same as name initials

Using: a=4, e=2, i=6, l=5, m=10, n=9, o=8, r=3, s=7, t=1, w=11

## Clue 5:

The clue reads: THE THIEF WENT FOR DRINKS

## The Culprit:

Clint Clooney

## The Confession:

I was just wanting to re 'direct' the movie!

21	16	40	42	600	108	42	180
I	w	a	s	j	u	s	t

16	40	80	180	21	80	28	180	120
w	a	n	t	i	n	g	t	o

30	36	500	32	21	30	36	15	180	144
r	e	'	d	i	r	e	c	t	'

180	24	36	90	120	60	21	36	63
t	h	e	m	o	v	i	e	!