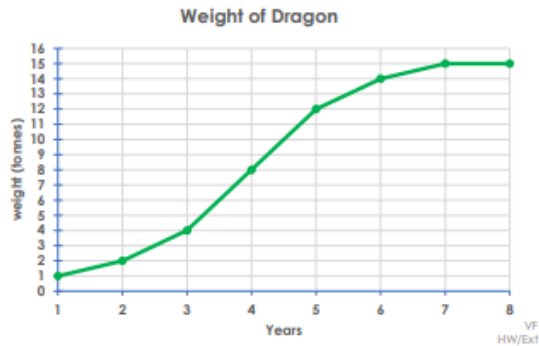


Tricky

1. This graph tracks the weight of a dragon from its first birthday until reaching adulthood.

- A. How much did the dragon weigh when it was 4?
- B. At what age did the dragon reach its full weight?

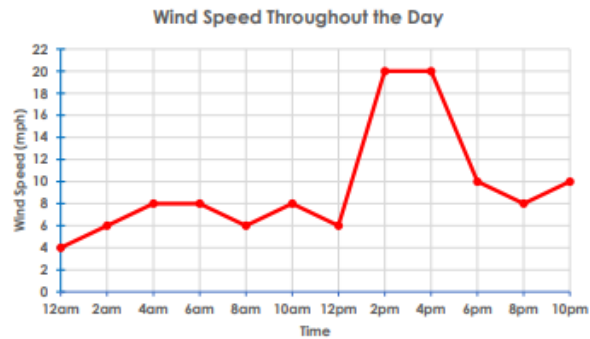


2. Which of these statements is false?

- A. His friend lives 4km away.
- B. John got home at 16:00.
- C. He stayed there for 4 hours.



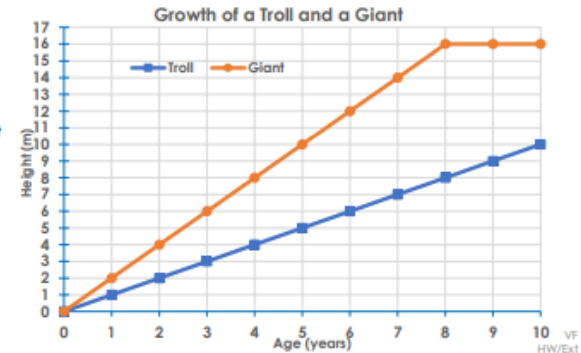
3. There was a storm during the day. What time did it start? Explain your answer.



Tricky

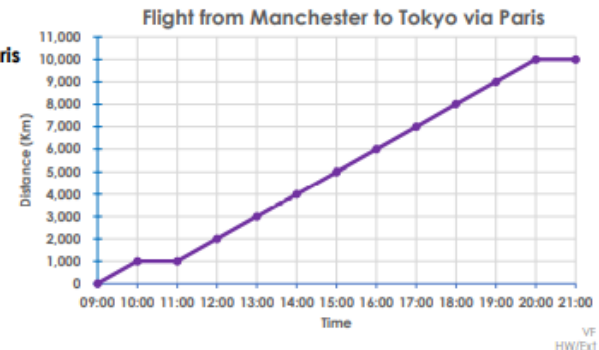
4. A troll and a giant grow at the same rate each year until they reach their full heights.

- A. At what age did the giant reach its full height?
- B. What was the troll's height when it was 7 years old?

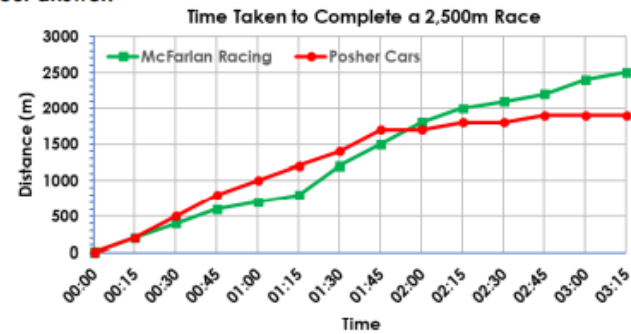


5. Which of these statements are false?

- A. The plane stopped in Paris at 10:00.
- B. The plane arrived in Tokyo at 21:00
- C. The distance between Paris and Tokyo is 10,000km.



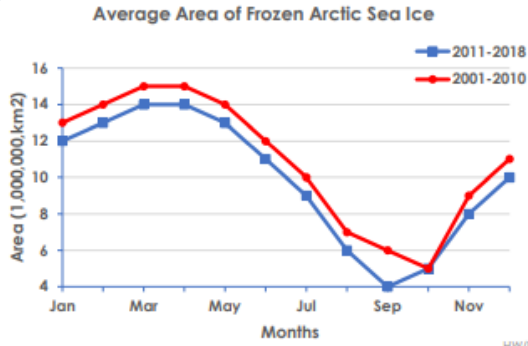
6. The 'Posher Cars' race car had engine problems. What time did the problems start? Explain your answer.



Trickiest

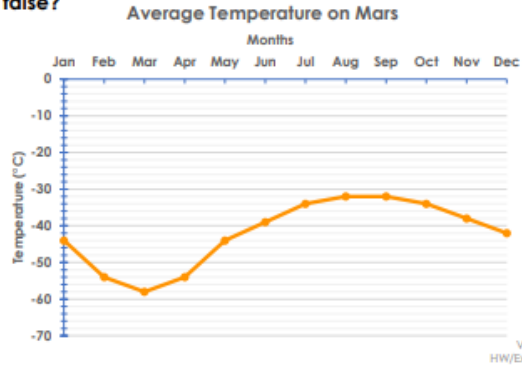
7. Use the chart to answer the questions.

- A. Which decade had the least amount of frozen sea ice?
- B. What is the difference between the average area of sea ice for September between the two decades?

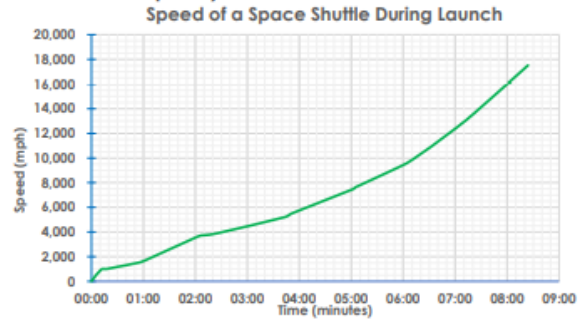


8. Which of these statements are false?

- A. Mars is coldest between August and September.
- B. The average temperature is the same in January and May.
- C. The difference between the highest and lowest average temperature is 24°C.



9. A space shuttle burns heavy fuel during a launch. When was the shuttle's acceleration at its fastest? Explain your answer.



- 7. A = 2011-2018; B = 2,000,000km²
- 8. A and C
- 9. The shuttle accelerated during the first 10 seconds.

- 4. A = 8 years old; B = 7m
- 5. B and C
- 6. The engine trouble started at 01:45. I know this because after 01:45 the distance hardly increased at all.

- 1. A = 8 tonnes; B = 7 years old
- 2. B
- 3. The storm started between 12pm and 2pm and continued until 4pm. I know this because there was a big increase in the wind speed between 12pm and 2pm.